

# SUMMIT PLAYERS THEATRE

## MACBETH PAPER DOLLS

On the following pages, you will find two Summit Players paper dolls and a series of costumes to dress them in. These dolls and costumes were designed and drawn by Amelia Strahan, Summit Players Theatre Costume Designer, based on her costume designs for our 2023 production of *MACBETH*, part of our Shakespeare in the State Parks programs.

A few notes from Amelia:

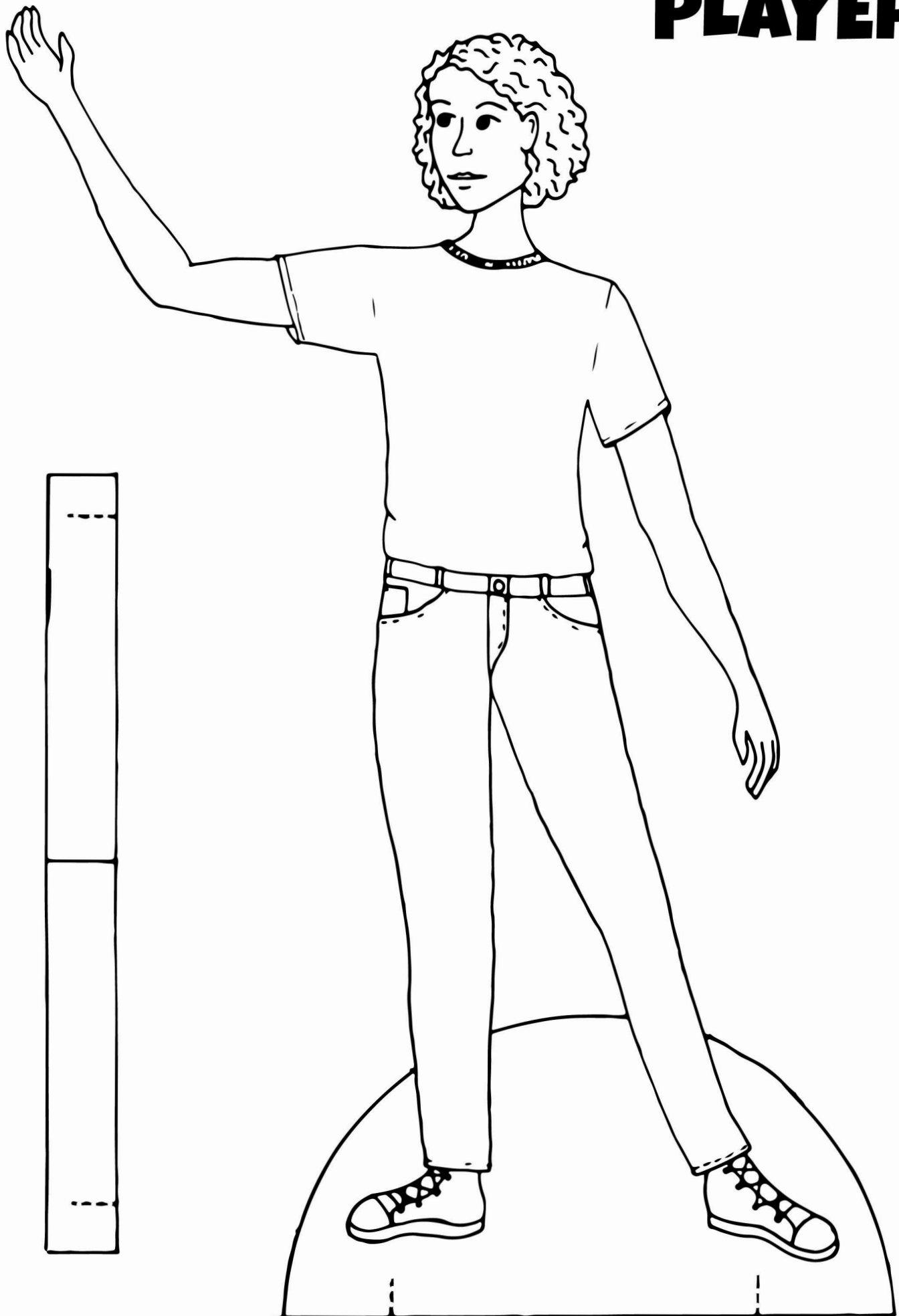
- Dolls should be printed on cardstock or backed with something similar in order for them to stand. Cut notches and fold the rectangle in half, then insert notches to create a base for the doll to stand on.
- Costume pieces can be printed on plain printer paper.
- In true Summit Players fashion, any costume piece can be worn by either doll.
- Hoods need the center cut out so you can see the dolls' faces.
- Color in the pieces however you like, cut everything out, and enjoy your Summit Players Paper Dolls!
- ***Always have adult supervision or assistance when cutting out pieces!***

If you want, you can send pictures of the way you've cut and colored your dolls to us at [info@summitplayerstheatre.com](mailto:info@summitplayerstheatre.com). Even if you can't see Shakespeare in the State Parks this summer, this is a fun way to bring a little of the magic into your own home!

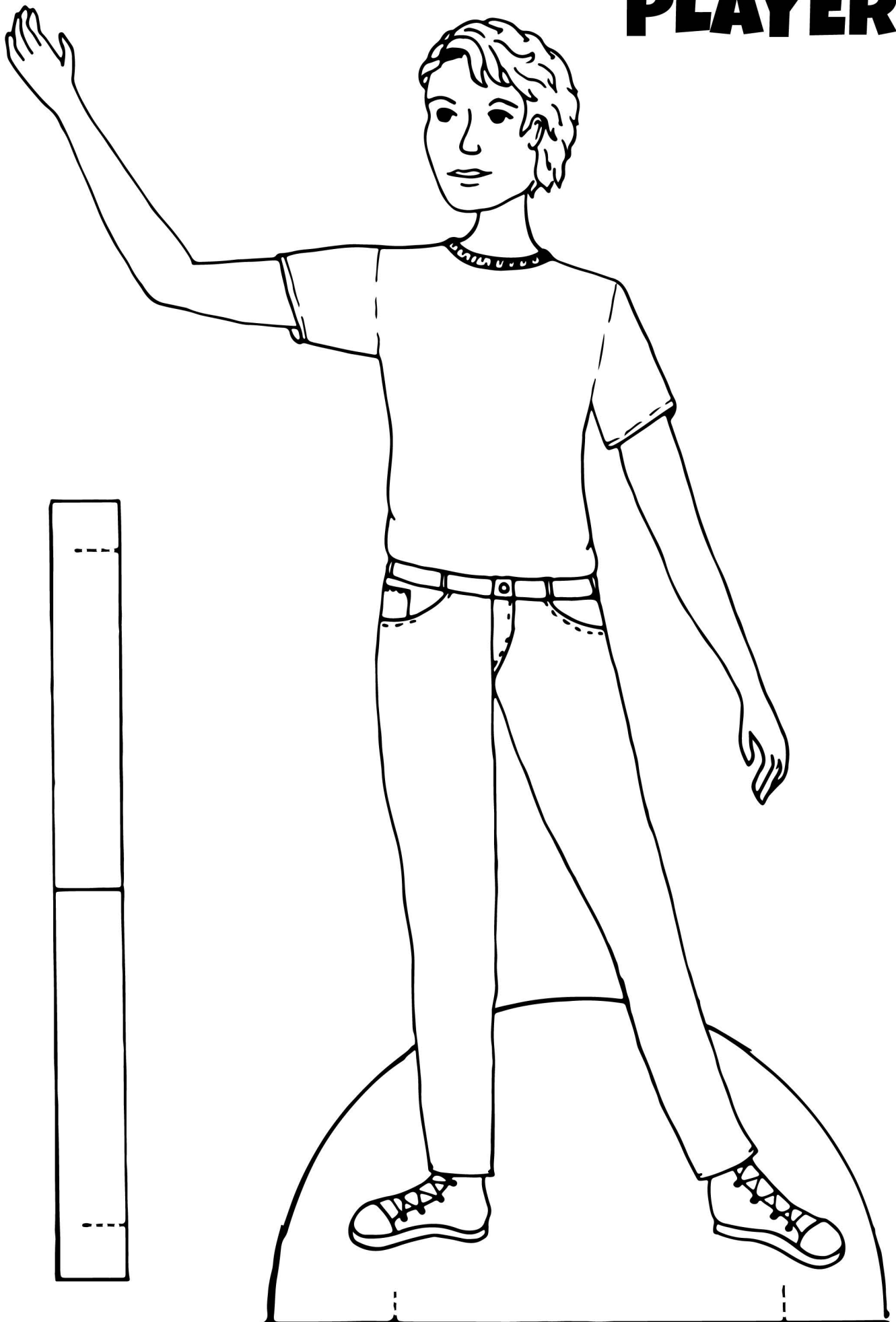
**Have fun!**

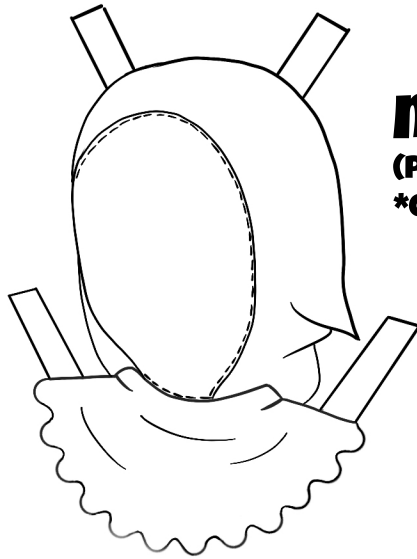


# PLAYER 1

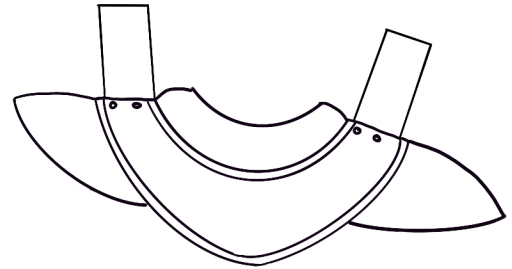


# PLAYER 2

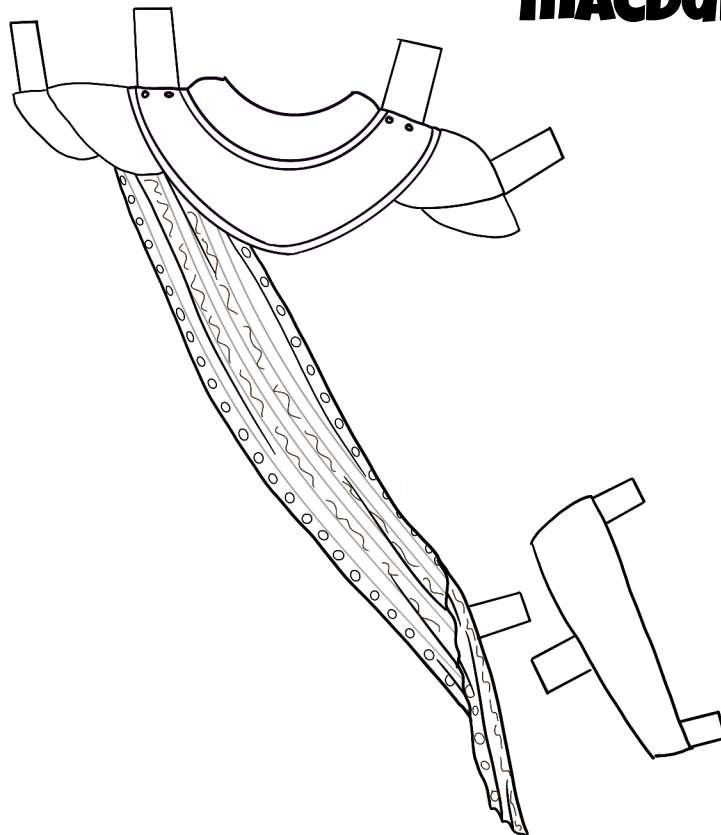
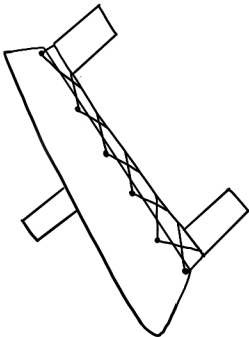




**MURDERERS**  
(PRINT TWO)  
\*CUT ALONG DOTTED LINE



**ROSS**

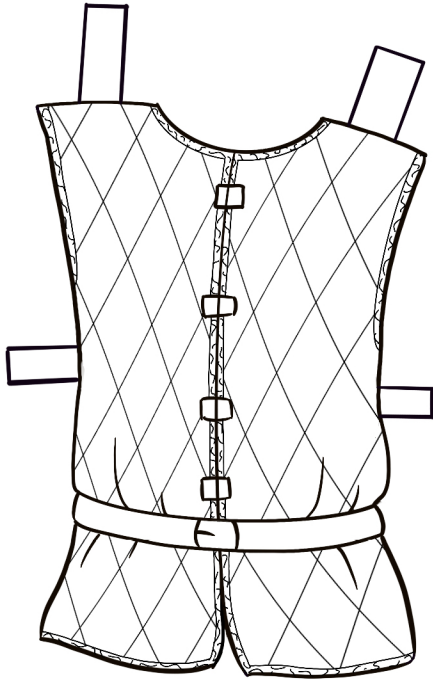


**MACDUFF**

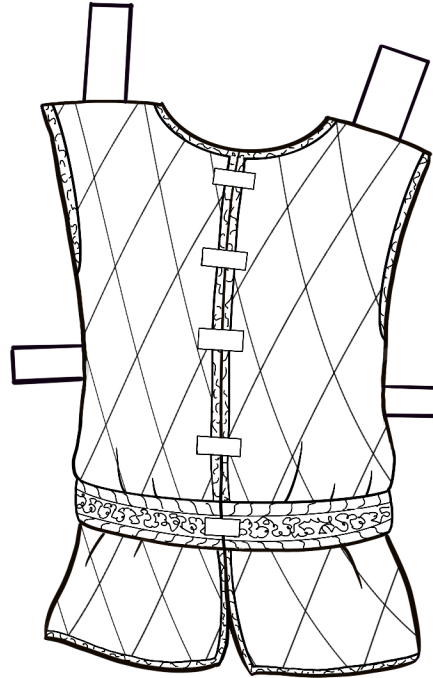
# **LADY MACDUFF**



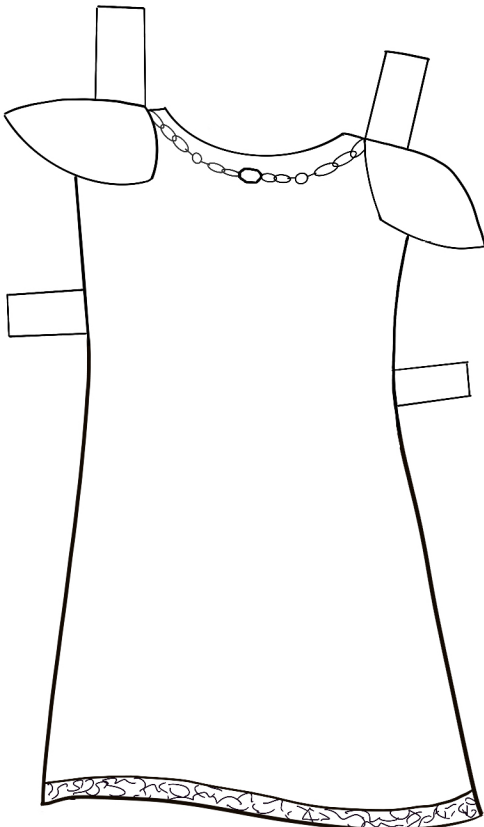
**MACBETH**



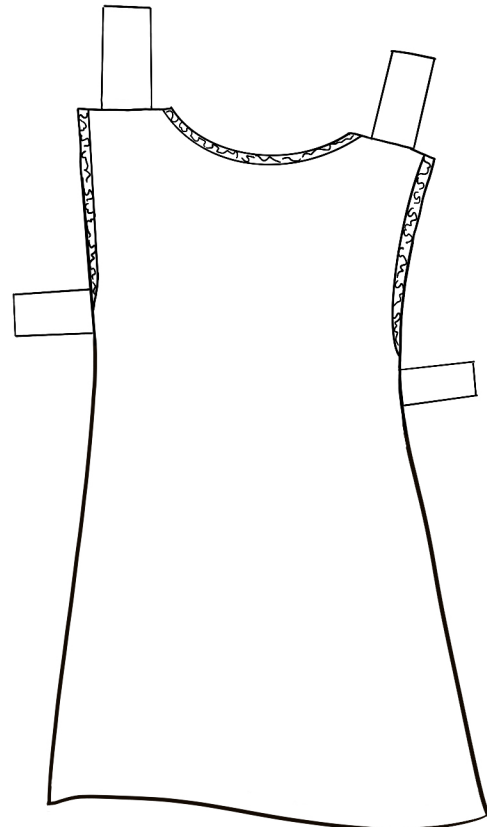
**BANQUO**



**DONALBAIN**



**FLEANCE**

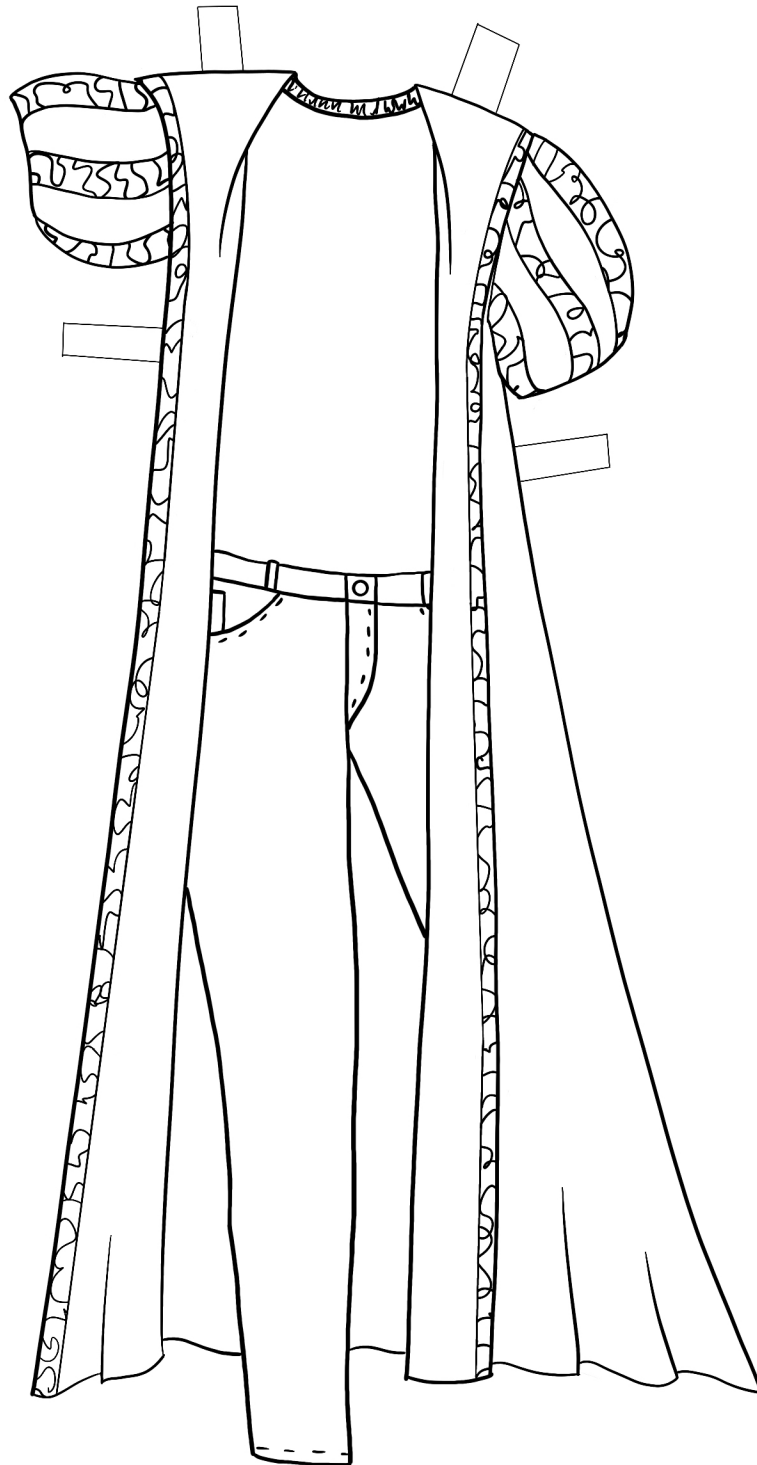


# **LADY MACBETH**





**DUNCAN**







**MALCOLM**



# WITCHES

(PRINT THREE)

\*CUT ALONG DOTTED LINE

